

Wheelchair Scale

Standard Features

- 36 in W x 36 in L - 1,000 lb mild steel painted scale with anti-slip rubber surface
- 36 in H x 30 in L handrail and mounting hardware
- 36 in W x 36 in L - mild steel painted pit frame
- Large 1 inch LCD display
- Push button or manual entry of tare weight
- Unit of measure: lb only, kg only, Lb/Kg
- 10 ft interface cable from scale to indicator
- EMR capable, USB
- BMI (body mass index) function
- Hold function

Specifications

Power:

9VDC, provided by six "AA" alkaline batteries (included) or AC adapter (optional)

Battery Type:

Six "AA" alkaline

Battery Use:

25 hours continuous use with batteries

Operating Temperature:

50°F to 104°F (14°C to 40°C)

Warranty:

Two-year limited warranty

Approvals:

CE

Part Number/Price

PART #	MODEL	CAPACITY	EST. SHIP WEIGHT	PRICE
150707	SD-1150-WP	1000 lb (450 kg) x 0.2 lb (0.1 kg)	295 lb	Consult

Options/Accessories

PART #	DESCRIPTION	PRICE
133077	9V AC adapter, 120V/230V auto switching †	Consult
102508	9V AC adapter, 230V ††	Consult

DIMENSIONS

A	36 in	D	31.5 in
B	36 in	E	37 in
C	3 in		

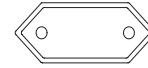


Model SD-1150-WP

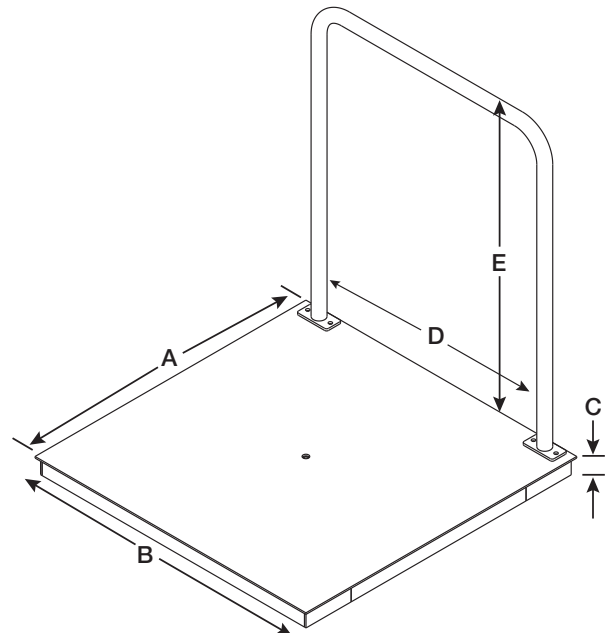
APPROVALS



† NEMA 1-15 Plug

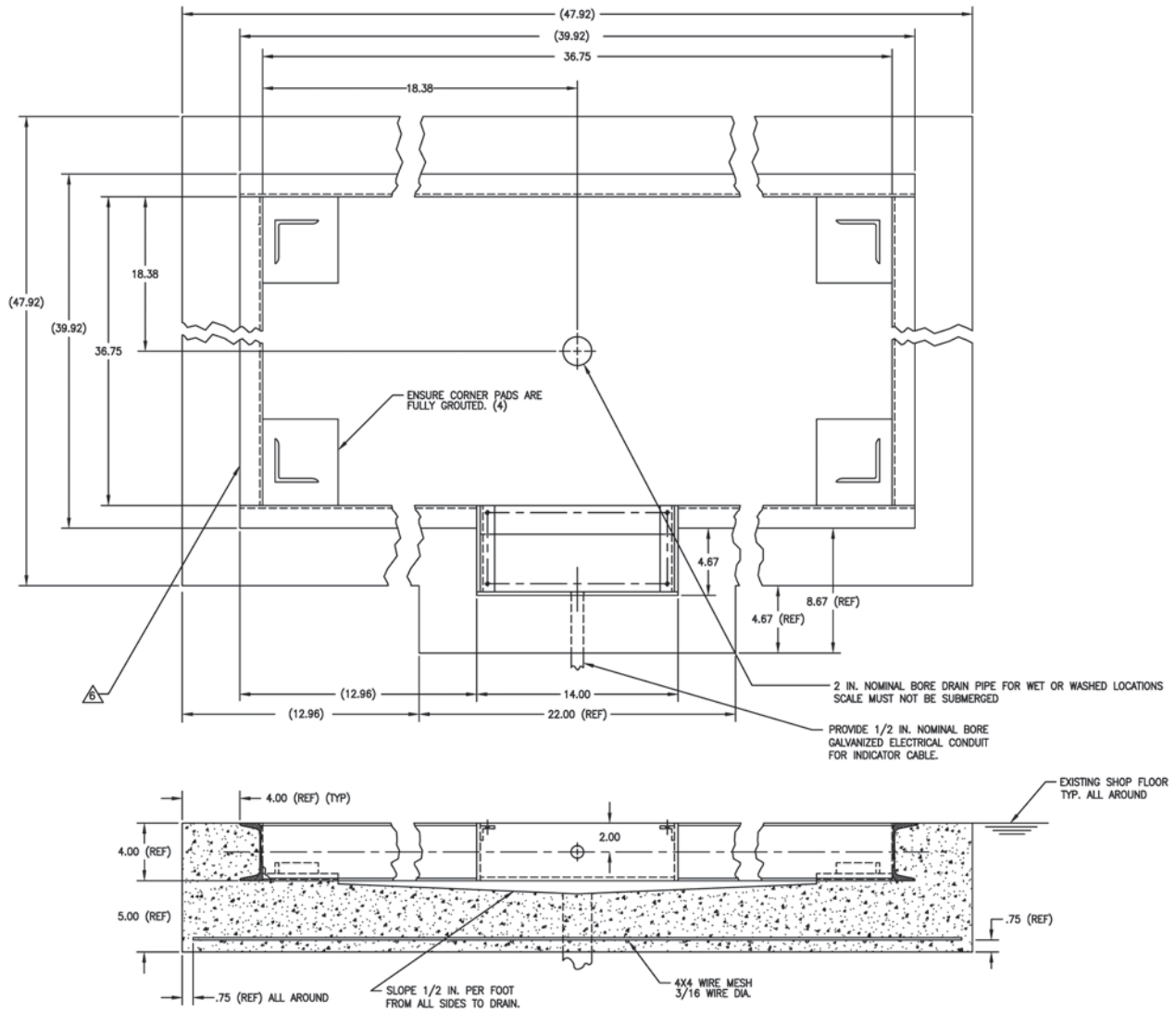


†† CEE 7/16 Euro Plug



Wheelchair Scale

Pit Frame Concrete Details



NOTE:

1. USE CONCRETE OF MINIMUM YIELD STRENGTH 5000 PSI OR 6-BAG MIX.
 2. ALLOW 7 DAYS TO CURE. WET CONCRETE PERIODICALLY DURING THIS TIME.
 3. DIMENSIONS SHOWN ASSUME FIRM, STABLE SOIL CONDITIONS. WHEN SOIL CONDITIONS ARE NOT ADEQUATE, PLACE FOUNDATION AT SUFFICIENT DEPTH.
 4. IN WET OR WASHDOWN APPLICATIONS WE RECOMMEND THE USE OF HERMETICALLY SEALED LOAD CELLS, AND THAT THE JUNCTION BOX BE MOUNTED REMOTELY IN A DRY LOCATION.
 5. WIRE MESH TO HAVE MINIMUM .75 COVER BOTTOM AND SIDES.
- ⚠️ ON STAINLESS STEEL VERSIONS, TWO PIECES OF 2 INCH ANGLE WILL BE SUBSTITUTED FOR THE 4 INCH CHANNEL.